

Colors for Concrete

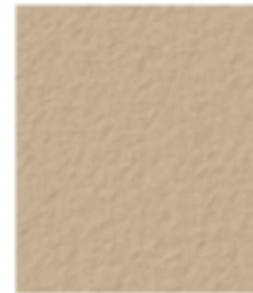
Davis Colors™ mix into any concrete, transforming it into a new design feature for building and paving projects or to enhance appearance around the home. Davis Colors™ are strong, durable and last as long as the concrete. Installation is cleaner and easier than

This pdf color card is just for ideas. If you choose a color by viewing this on your PC or from a printout of the pdf file, your colored concrete may be a big surprise. Please make your selection from our printed color card, hard samples or job site test.

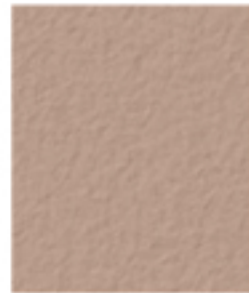
toppings, stains or coatings and requires less labor. There are bold and intense premium colors, standard colors that make an attractive upgrade for any project, and

low-cost subtle shades that add a hint of color to gray concrete. As the leading producer of colors for concrete since 1952, we offer the widest spectrum available.

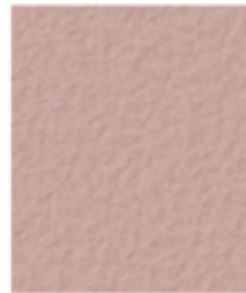
This pdf color card is just for ideas. If you choose a color by viewing this on your PC or from a printout of the pdf file, your colored concrete may be a big surprise. Please make your selection from our printed color card, hard samples or job site test.



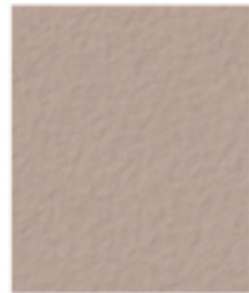
SANDSTONE
0.75 LB 5237



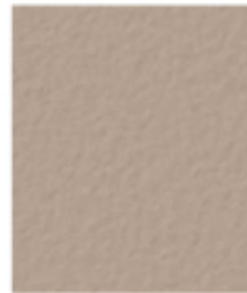
CANYON
0.5 LB 160



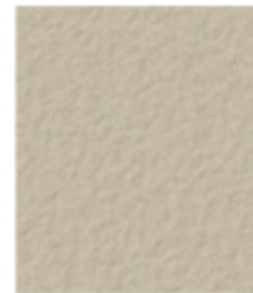
SANTA FE
0.75 LB 1117



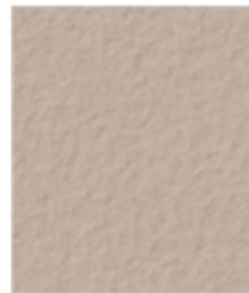
MOCHA
1 LB 9058



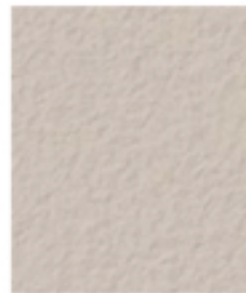
RUSTIC BROWN
2 LBS 6058



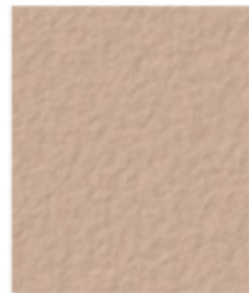
PEBBLE
0.5 LB 641



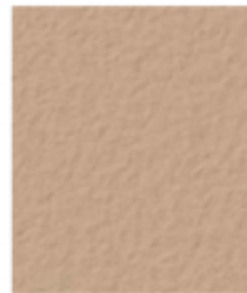
DUNE
0.5 LB 6058



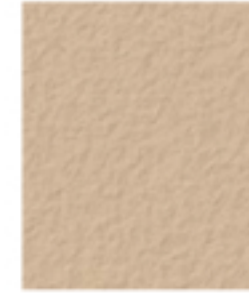
OUTBACK
0.5 LB 677



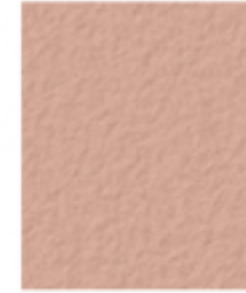
SEQUOIA SAND
1 LB 641



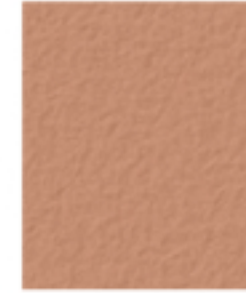
YOSEMITE BROWN
2 LBS 641



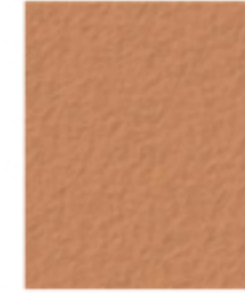
SAN DIEGO BUFF
1.5 LBS 5237



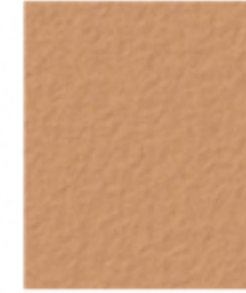
SUNSET ROSE
1 LB 160



BAJA RED
2 LBS 190

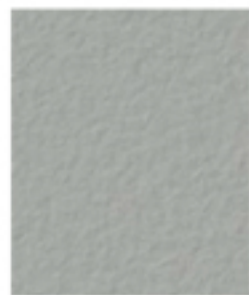


TERRA COTTA
4 LBS 10134

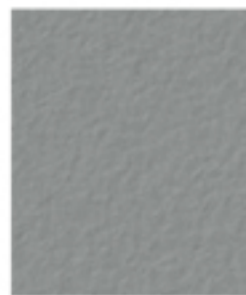


SPANISH GOLD
3 LBS 5064

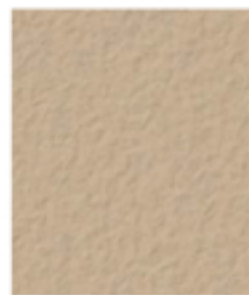
Color name, number and dose-rate to mix with each 94 lb. sack of cement.
(Dry dose rates shown, liquid dose rates higher)



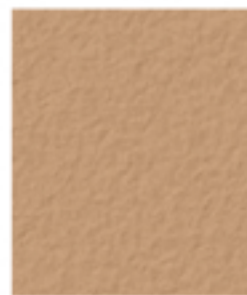
SILVERSMOKE
0.25 LB 8084 * or 1.25 LBS 860



LIGHT GRAY
0.5 LB 8084 * or 2.5 LBS 860



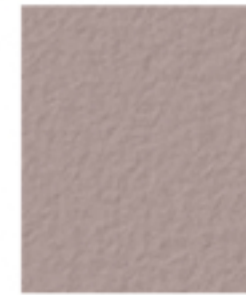
OMAHA TAN
1 LB 5084



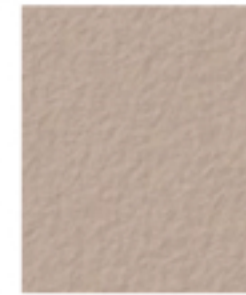
HARVEST GOLD
2 LBS 5084



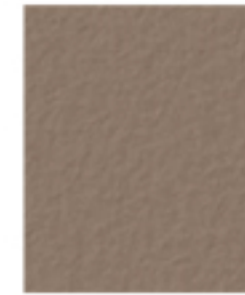
MESQUITE
1 LB 677



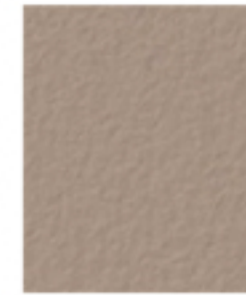
TAUPE
2 LBS 677



SIERRA
2 LBS 61078



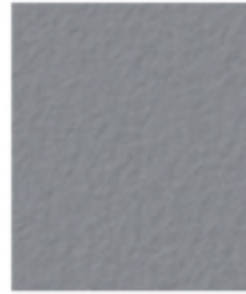
ADOBE
4 LBS 61078



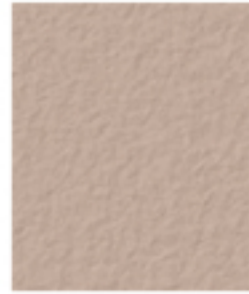
KAILUA
4 LBS 677

← Concrete Base Color

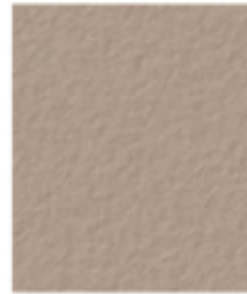
The natural base color of concrete, finishing and curing method determines final color. This card simulates lab samples made with a light broom finish from Type II gray cement, sand and water at 0.56 water/cement ratio for a 4" slump (see uncolored reference at left). Different cements, sand, rock, mixing and job-site conditions can alter color from this card. Concrete is produced from natural materials. Surface variation common to uncolored concrete can impact colored concrete.



DARK GRAY
1 LB 8084 * or 5 LBS 860



BAYOU
1 LB 6130



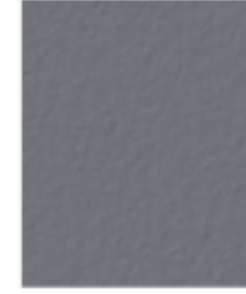
COCOA
2 LBS 6130



PEWTER
1 LB 860



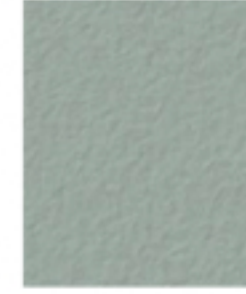
COBBLESTONE
2 LBS 860



GRAPHITE
2 LBS 8084 *



WILLOW GREEN
3 LBS 5376



GREEN SLATE
3 LBS 3685

* Caution: 8084 is not compatible with air-entraining admixtures. See back page for more information.

January 2014 Notice- All color swatches adjusted to new uncolored gray base cement shade. These swatches differ from previous color cards.